



tuba[®] clean

+3 Formel
+ Reinheit
+ Schutz
+ Pflege

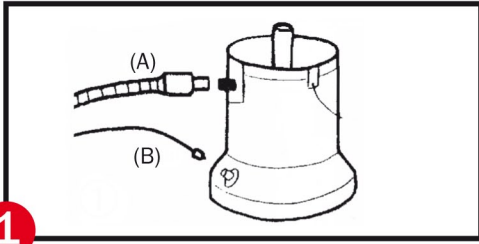
Operation Instructions

**for Spray Carpet Extraction Cleaner
and Upholstery Nozzle
including Practical Tips for
Professional Cleaning and Care**



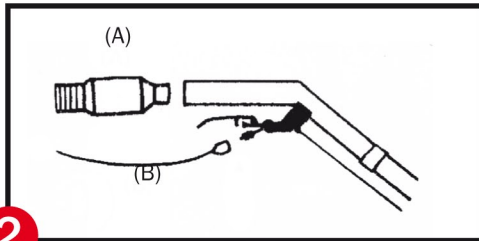
Professional Cleaning and Care

Operation Instructions



Before using the **tuba clean carpet cleaner** connect the thick vacuum hose (A) and the thin solution supply hose (B) to the appliance.

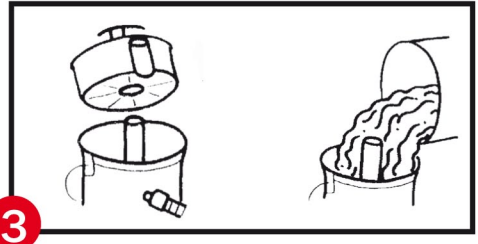
Caution: Before using the carpet cleaner vacuum your carpet with a traditional vacuum cleaner. Clean the carpet on a small area normally not on view in order to check the carpet for colour fastness and material resistance. We recommend to pre-treat heavily soiled or stained areas with the **tuba clean pre-cleaner**. To remove persistent stains please use the **tuba clean pre-spotter**.



Then connect the suction and solution supply hose to the suction wand for carpet cleaning and to the upholstery cleaning nozzle for upholstery cleaning. The connections must be fully locked in position.

Caution: This spray extraction carpet cleaner is not for use as vacuum cleaner! **Do not treat two stacked carpets and take care not to over-wet the carpet or the upholstery. Do not use it for henequen, coir and silk materials!**

Open the appliance and remove the white tank. Fill 5.5 l warm water (up to 40°C) into the white tank or another container. Add the tuba cleaner in accordance with the indicated dosage instruction.



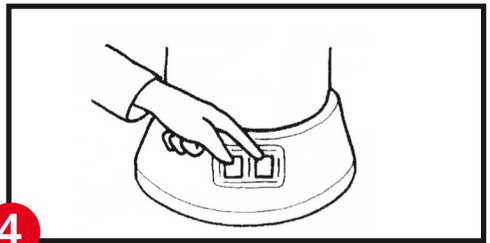
Then pour the compound solution into the bottom blue clean water tank. Replace the empty white soiled water tank into the appliance and close the cover.

Caution: Please take care not to get some liquid in the centred blue suction wand while pouring the solution. Do not in any case mix water and the main or upholstery detergent in the bottom container.

Do not exceed the maximum mark in the clean water tank (5.5l) to prevent the liquid running out and causing a appliance defect (short circuit)!

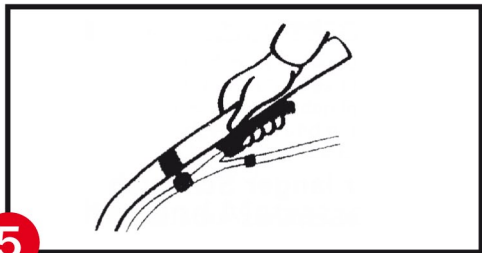
Do not use other detergents with this appliance than the original tuba clean agents.

Other detergents may cause a failure of the appliance and the object to clean. In addition to that, the use of other agents may cause risks for human and animal health such as harmful allergies and skin irritations.



Plug the appliance to the mains (220 - 240 V AC) and turn the two switches (spray pump and vacuum) ON.

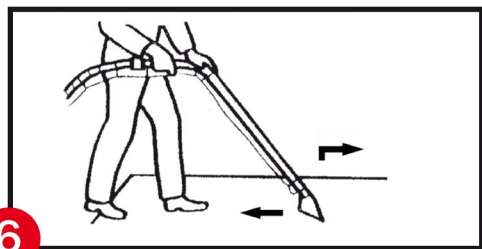
Operation Instructions



For spraying/vacuuming squeeze the trigger. Start your main carpet cleaning process in the corner located furthest from the door. Work carefully and with low pressure.

Caution: Stop immediately the cleaning process and switch off the appliance in case of water running out. Check if the maximum mark (5.5 l) of the clean water tank has been exceeded. Reduce the water amount as required. Switch on the appliance again to continue the cleaning process.

For carrying the appliance over steps or stairs use the carrying handle. On even floor pull it using the handle. Take care of the loosely mounted cover and do not pull the appliance by its hoses or the power supply cable.

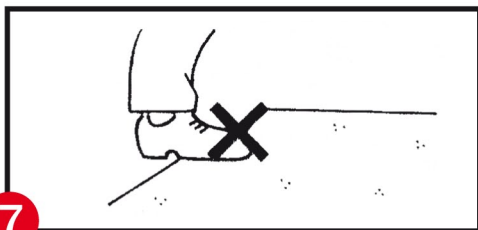


Draw the floor or upholstery cleaning nozzle slowly towards you while squeezing the trigger. Treat one area after the other and use overlapping strokes. Vacuum the cleaned patches once again without squeezing the trigger.

So you suck up the residual water as much as possible and run the carpet fibres in one direction. We recommend to impregnate the carpet subsequently applying the **tuba clean intensive impregnating agent**.

Impregnating prevents dirt penetrating into the fibre and the dirt on the top is easier to vacuum. So an immediate resoiling is prevented for a particular long period of time.

Caution: If the appliance stops spraying, the bottom tank is empty. Switch off the appliance immediately to prevent from damages. Empty the full soiled water container and give a good rinsing to remove any remaining soil or dirt. Then fill a new cleaning solution into the bottom container (see point 3).



Walk on the carpet only if it has completely dried up. After finishing the carpet cleaning process please clean the appliance: Refill the bottom container with clean water and rinse the hoses and accessories thoroughly as if spraying/vacuuming. Provide a bucket for collecting the water. Then remove the remaining dirt with a cloth.

After use and for transportation purposes remove the hoses from the appliance and the suction wand.

Caution: If the furniture has to be replaced before the carpet has completely dried up, the furniture parts that are in contact with the dampish carpet have to be protected with e.g. plastic strips to prevent from getting rusty or from wood staining. Walk on the carpet without shoes only.

Safety instructions

General

These operating instructions are destined for persons who carry out the cleaning process using this appliance. Do not operate the appliance without having carefully read these instructions. Following these operating instructions ensures the appliance to work without failure.

Use only the original tuba clean products adjusted to the appliance.

They do not leave any residues detrimental to health. The remaining agents and the absorbed liquids can be disposed of by the traditional wastewater system.

General regulations

- Plug the appliance to a 220 - 240 V AC outlet only as it is indicated on the nameplate.
- Follow the dosage instructions indicated on the original tuba clean products.
- **Do not exceed the maximum mark in the clean water tank (5.5 l).**
- Do not vacuum explosive, highly inflammable, combustible, solvent, glowing, toxic, or un healthy substances!
- Check the flexes and plugs not to be damaged and the appliance to be in trouble-free operation.
- Use original accessory parts only.
- Before using an extension lead verify that it meets the necessary technical requirements.
- Avoid damages to the cable (heat, oil, sharp edges, and rough areas).
- Do not leave the appliance unattended when it is switched on.
- Do not use the appliance close to heat sources such as fire, gas, or electric ranges etc.
- Do not store the appliance close to radiators or other heat sources because of possible material deformation.
- Do not carry or pull the appliance by the power supply cable!
- Do not unplug the appliance with wet hands or by pulling the power supply cable.
- Do not expose the appliance to rain or other humidity. Store in a dry place.
- The filter on the suction connection in the soiled water tank must be clean.

- Do not place the appliance in rooms with temperatures below 0°C. **Risk of freezing up!** Take special care of possible freezing during vehicle transportation.
- Before cleaning unplug the appliance from the mains.
- Appliance failure has to be indicated to the hire company.
- Only the tuba clean qualified service centre is allowed to carry out repair works.

Switch off the appliance immediately or do not start it up in the case of:

- a. visible signs of damages of the appliance,
- b. defective cables or hoses,
- c. possible damages after fall,
- d. foam or liquid running out of the appliance.

The appliance must be unplugged from the mains:

- a. each time before filling and emptying the water tanks,
- b. in the case of non-usage, work interruption, and after finishing work,
- c. each time before cleaning and care of the appliance,
- d. each time before leaving the room (even for a short time).

This appliance has not been designed to be used by persons (including children) suffering from restricted physical, sensory or mental abilities or in default of experience and/or knowledge unless they are supervised by a person who is responsible for their safety or they are instructed how to use the appliance. Take care of children in order to ensure that they do not play with the appliance. Subject to alterations due to technical progress or improvement!

Typ: TW 300S

Betriebsspannung: ~220-240 V 50Hz

Max. Druck: 2,3 bar

Leistung: 900 W



IP 4X

Cleanliness, protection and care of your home

Every textile floor covering requires a periodic thorough cleaning depending on the use intensity in addition to the daily care and intermediate cleaning. You have made a good choice by selecting the **tuba clean spray extraction carpet cleaning system** for an effective cleaning and care of your carpets and/or your upholstery.

Leading carpet and upholstery manufacturers recommend to use the **tuba clean spray extraction carpet cleaner** and its pertaining tuba clean products for the professional gentle to fabrics carpet cleaning. All tuba clean formulas are tested independently at regular intervals, and they are steadily improved.

The thorough and deep cleaning and care of your carpets and upholstery with the **tuba clean carpet and upholstery system** is not only really easy but also environment friendly and low-cost.

The **tuba clean carpet and upholstery cleaning system** consists of the **tuba clean spray extraction carpet cleaner** including the upholstery cleaning nozzle and **5 tuba clean cleaning and care products** to be used as needed. The **tuba clean spray extraction carpet cleaner** has been designed for the use of **tuba clean product agents** only.

Only the use of the original tuba clean products can ensure that:

- Even heavy soil and odour will be removed hygienically and thoroughly with your fabrics and fibres gently treated.
- The colours of your carpet and upholstery get refreshed up and are actively protected from getting grey.
- The cleaning agents worked into the carpets/upholstery under pressure get completely vacuumed together with the loosed soil.

- The number of mite allergens causing the house dust allergy is considerably reduced.
- Special agents (polymers) in the tuba clean main detergent prevent immediate resoiling and you can enjoy the comfortable feeling of perfect cleanliness, protection and care in your home for a long period of time.
- Even Oriental carpets can be cleaned in a gentle and safe manner.
- Also your upholstery, your mattresses, and car seats can be cleaned with the **tuba clean upholstery cleaning nozzle** equipped with a 3 m hose while remaining gentle to your fabrics.
- The **tuba clean carpet cleaner** does not get damaged.
- The remaining agents and the absorbed liquids can be disposed of by the traditional wastewater system without being further detrimental to the environment.
- There is no risk for human and animal health such as allergies and skin irritations due to **no harmful residues** remaining in the carpets or upholstery.

Notice: For any damages caused by other detergents than the tuba clean products no liability shall be assumed. If the tuba clean spray extraction cleaner gets damaged caused by the use of other detergents than the tuba clean products they are fully charged to the hirer's account!

Proper cleaning and care by the use of tuba clean products ensures a long durability and keeps the attractive appearance and the value of your carpets and upholstery.

The simple way to clean your carpets and rugs...



1

Fill the tuba clean agent into the white tank filled with clean water (up to 5.5 l).



4

and lock the transparent dome cover of the appliance. Switch the carpet cleaner on.



2

Then pour the compound solution into the spray extraction carpet cleaner.



5

Squeeze the trigger...



3

Replace the empty white tank...



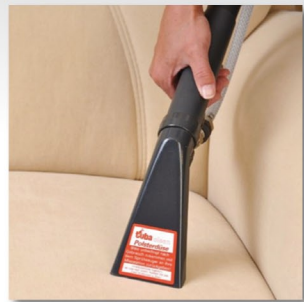
6

to spray the tuba clean solution in the carpet and to vacuum it together with the soil.

...and even your upholstery, car seats and mattresses

Using the **tuba clean upholstery cleaner** makes your upholstery, your car seats, and mattresses hygienically clean while remaining gentle to your fabrics.

Use the **upholstery nozzle** included in the rental charge for the tuba clean carpet cleaner. Fit the upholstery nozzle to the suction and solution supply hose.



tuba clean Vertriebs GmbH

PO Box 200 249 • D-40776 Monheim am Rhein
Phone +49 (0) 2173-96 59 90 • Fax +49 (0) 2173-96 5992
www.tuba-clean.de • E-mail: info@tuba-clean.de

